



**Bobcat**<sup>®</sup>

*One Tough Animal.*

# DIESEL FORKLIFTS

5-Series, Pneumatic, 4.0 to 5.5 ton capacity

🌐 MEA, CIS



# INTRODUCTION

# ONE TOUGH ANIMAL



## BOBCAT'S HISTORY

In 1958, Melroe Manufacturing Company introduced a compact front-end loader that evolved quickly into the M400, the world's first true skid steer loader. The company soon adopted what became the world-famous 'Bobcat' brand – and its success paved the way for the global compact equipment industry we know today.

## YEARS OF EXPERIENCE

In 2021, Bobcat expanded its portfolio by acquiring Doosan Industrial Vehicle. This specialist in material handling equipment constructed its first forklift in 1968 and went on to establish a global presence with 400 dealers in 93 countries.



## BOBCAT TODAY

Bobcat is expanding its portfolio with the addition of forklifts and reach trucks for the material handling industry. Offering a comprehensive line-up that will meet all your intra-logistics needs. Bobcat forklifts and reach trucks are produced in our factory in Korea, while our premium quality warehouse equipment is made in Germany.



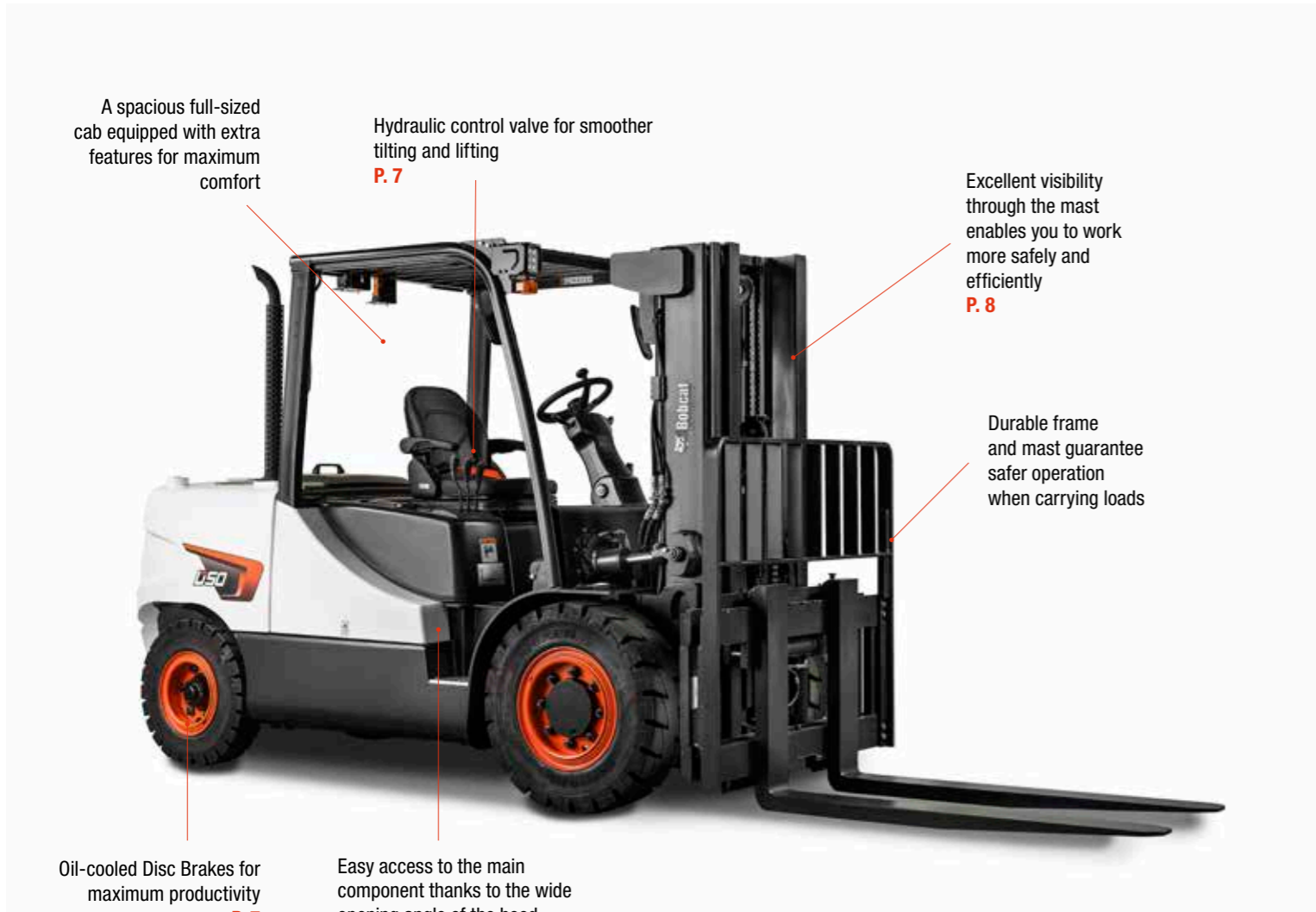
## OUR MISSION

We empower operators to accomplish more, while working in the toughest conditions and tightest situations. When our customers have the will, we provide the way.

# TOUGH, AGILE & SAFE

## DESIGNED FOR PRODUCTIVITY

With high-performance engines, fluid, intuitive controls, superior operator comfort, and a host of safety features the Bobcat D40S-5 Series are ready to boost the productivity of your business while keeping spending in check thanks to a low cost of ownership.



A spacious full-sized cab equipped with extra features for maximum comfort

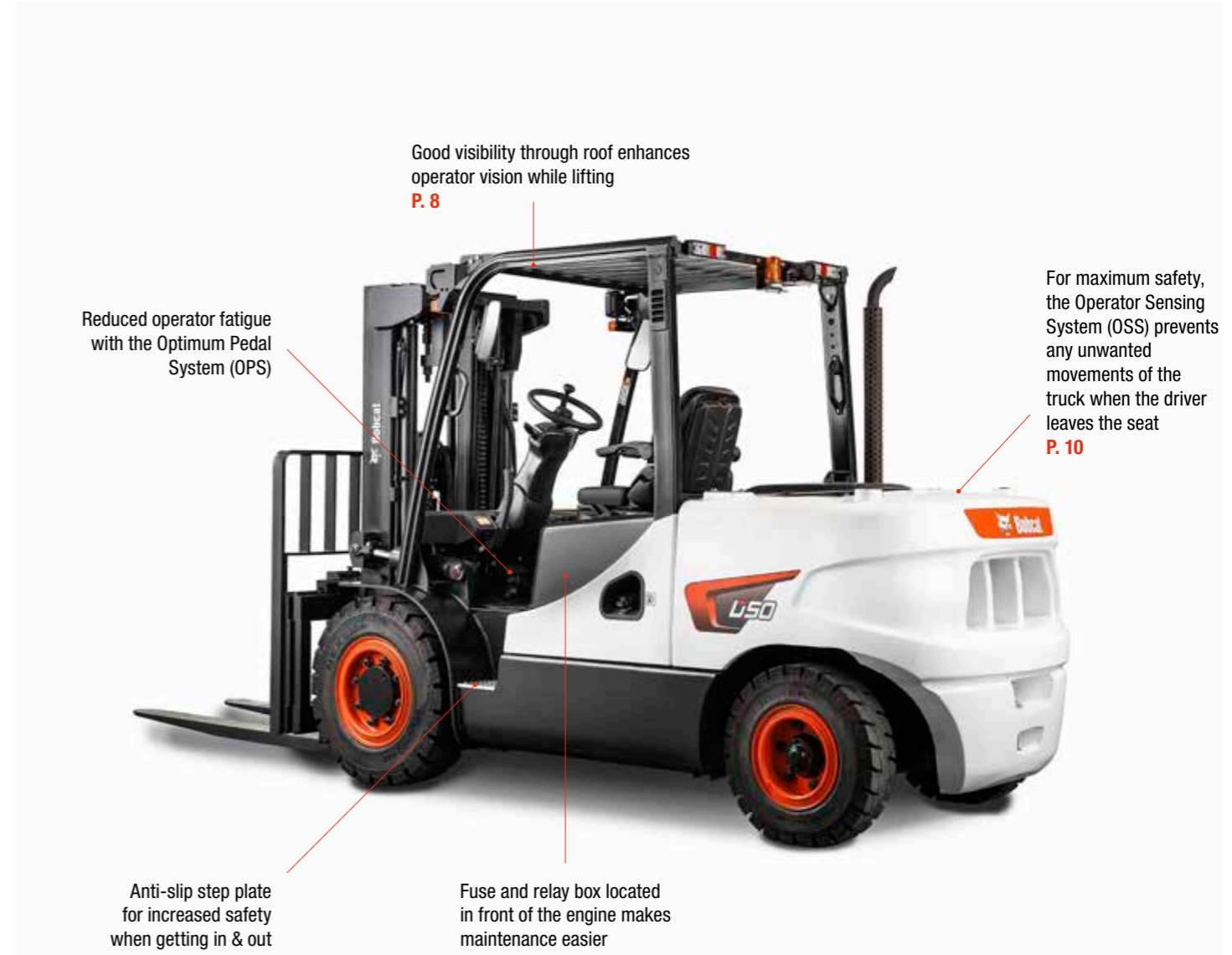
Hydraulic control valve for smoother tilting and lifting  
P. 7

Excellent visibility through the mast enables you to work more safely and efficiently  
P. 8

Durable frame and mast guarantee safer operation when carrying loads

Oil-cooled Disc Brakes for maximum productivity  
P. 7

Easy access to the main component thanks to the wide opening angle of the hood  
P. 7



Good visibility through roof enhances operator vision while lifting  
P. 8

Reduced operator fatigue with the Optimum Pedal System (OPS)

For maximum safety, the Operator Sensing System (OSS) prevents any unwanted movements of the truck when the driver leaves the seat  
P. 10

Anti-slip step plate for increased safety when getting in & out of your machine

Fuse and relay box located in front of the engine makes maintenance easier



### POWERFUL AND EFFICIENT

Get more done daily thanks to high-performance engines with 2-speed power shift transmission and up to 67.7 kW of power to boost productivity in every task.  
P. 6-7



### COMFORTABLE ALL SHIFT LONG

Enjoy the comfort of a spacious cab with plenty of leg room, deluxe suspended seat, integrated instrument panel, tiltable steering column, and many more features.  
P. 8-9



### SAFETY FIRST

Protect your investment, workforce, and handled goods. Excellent all-around visibility, reliable oil-cooled brakes, and a host of other safety features come as standard.  
P. 10-11



### BUILT TOUGH

This series delivers reliability through features like robust mast design, engine shutdown, and anti-dust frame & component so you can enjoy the power of Bobcat for years to come.  
P. 12-13

# OUTSTANDING PRODUCTIVITY



## SEAMLESS SHIFTING

Experience seamless transitions between tasks or adjustments to different conditions with our 2-speed autoshift transmission, allowing you to achieve the perfect balance between precision and movement.



## BUILT TOUGH

The superior hydrostatic steering system is designed for high shock absorption, while the rugged frame, fully floating drive axle, and oil-cooled brakes ensure years of productivity, all day, every day.



## HYDRAULIC CONTROL

Experience the convenience of hydraulic control for lifting and tilting, providing efficient and precise handling for all your material transport needs.



## OIL-COOLED DISC BRAKES

Enjoy oil-cooled disc brakes for better braking and faster cycles, giving you the confidence to navigate and stop quickly. This enhancement significantly speeds up task completion and boosts overall productivity.

# COMFORT & CONTROLS



## ▶ IMPROVED VISIBILITY

Benefit from improved operator visibility in all working positions, thanks to a wider mast window, repositioned hydraulic hoses, and a flat bar-style overhead guard.

## ▶ DELUXE SUSPENSION SEAT

The deluxe suspension seat is designed for operator comfort, offering a larger seat back angle, extended seat travel length, and operator's weight resistance on the front side, allowing for multiple adjustments to create the most comfortable seating experience.



## ▶ SPACIOUS OPERATOR COMPARTMENT

The cab's ample leg room, adjustable steering column, and ergonomic operator pedals ensure ease of entry and exit for the operator.

## ▶ INTEGRATED INSTRUMENT PANEL

The centralized and user-friendly instrument panel enhances operator efficiency by providing easy access to critical information such as fuel gauge, engine hour meter, engine oil pressure, coolant levels, and more, ensuring operators are constantly informed about the vehicle's performance.

## ▶ CONVENIENCE TRAY



This truck comes equipped with a handy convenience tray that stores refreshments, paperwork, small tools, and more, for more efficiency on the job.

## ▶ EASY ACCESS



The low step height, complemented by an easy entry grab bar and an anti-slip step plate, facilitate easy and safe operator entry and exit.

## ▶ OPTIMUM PEDAL SYSTEM



The Optimum Pedal System (OPS) – equipped with a new electronic accelerator – is designed to reduce operator fatigue and deliver the best driving experience for the operator.



# SAFETY IN EVERY MOVE

## ▶ ADVANCED PROTECTION FOR YOU AND YOUR OPERATION

Bobcat forklifts have safety embedded in their DNA. Packed with tons of features that protect your health and your investment, these machines give you peace of mind in every task, every day.

### ▶ OPERATOR SENSING SYSTEM

Our Operator Sensing System (OSS) ensures that whenever the operator leaves the seat, the truck's travel and mast lifting functions automatically stop. This intelligent system prevents unintended forklift movements when the operator is not seated, enhancing safety in the workplace.



### ▶ MAST LOWERING INTERLOCK & TILT LOCK

The Mast Lowering Interlock & Tilt Lock system prevents unintentional lowering and tilting of the mast, safeguarding both the truck and the load while maintaining a secure work environment.



### ▶ BACK-UP ALARM

The back-up alarm emits a warning signal when the operator is driving in reverse, alerting those nearby and further ensuring safety in the workplace.



### ▶ REAR GRAB BAR

Boost your workplace safety with the help of a conveniently-placed rear grab bar that gives you a stable point to hold onto when operating the truck in reverse or when maneuvering in tight spaces. There's also a horn button to be pressed with your thumb whenever you need to.



### ▶ SEAT BELT INDICATOR

Enhance safety in your forklift operations with the seat belt indicator, to protect both your team and your business.



### ▶ PARKING BRAKE ALERT

Our parking brake warning system prioritizes operator safety and safeguards against accidental movement.



### ▶ BRIGHTER AND SAFER

Experience a brighter, safer, and more efficient workday with our front lights, combination lamps and additional rear light.



### ▶ REAR-VIEW MIRROR

The rear-view mirror provides more visibility, preventing accidents while reversing and avoiding collisions with objects and pedestrians, ensuring a safer work environment.



# BUILT TO LAST

## ▶ A HERITAGE OF RELIABILITY

The superior hydrostatic steering system is designed for high shock absorption, while the rugged frame, fully floating drive axle, and oil-cooled brakes ensure years of productivity, all day, every day.



**THERE'S NO TIME FOR DOWNTIME. STAND UP TO EVERY TASK THAT COMES YOUR WAY. DAY AFTER DAY.**

## 2 YEAR WARRANTY

### ▶ WARRANTY

Bobcat develops every machine to the highest standards of quality and durability. That's why our standard warranty provides 24 months or 2 000 operating hours (whichever occurs first) of coverage.



### ▶ PROTECTION PLUS EXTENDED WARRANTY

Enjoy total peace of mind with Protection Plus extended warranty. Providing the same level of protection as the standard warranty, Protection Plus also reflects different customer needs and expectations by offering a choice of durations and annual operating hours.

### ▶ EXTENSIVE DEALER NETWORK

You can rely on our network of dealers and service partners who are always ready to help you.

### ▶ BOBCAT GENUINE PARTS

Quality components delivered to our dealers guarantee that all of our equipment is built to last, withstand the toughest conditions and provide reliable performance.

# MAIN SPECIFICATIONS

TECHNICAL DATA ACCORDING TO VDI 2198															
		D40S-5		D45S-5		D50C-5		D55C-5		D45SC-5		D50SC-5		D55SC-5	
Power type		Diesel													
Operator type		Driver-seated													
Load capacity (kg)	Q	4 000		4 500		5 000		5 500		4 500		5 000		5 500	
Load center (mm)	c	600						500							
Load distance, center of drive axle to fork (mm)	x	561				571				561				571	
Wheel base (mm)	y	2 000				2 100				2 000				2 100	
Service weight (kg)		6 180	6 100	6 550	6 540	7 050	7 020	7 390	7 050	6 180	6 100	6 550	6 540	7 050	7 020
Wheels, number front / rear (x=driven)		x 2 / 2													
Tilt of mast (degree)	$\alpha/\beta$	8 / 10													
Height, mast lowered (mm)	h1	2 090 – 3 450		2 090 – 3 455				2 230		2 090 – 3 450		2 090 – 3 455			
Free lift (mm)	h2	160 – 1 730		160 – 1 580				170 – 1 440		160 – 1 730		160 – 1 580			
Lift height (mm)	h3	3 000 – 6 500						2 750 – 5 925				3 000 – 6 500			
Height, mast extended (mm)	h4	4 270 – 7 885		4 420 – 7 390		4 170 – 7 355				4 270 – 7 885		4 420 – 7 390		4 170 – 7 355	
Height, overhead guard (mm)	h6	2 230		2 230		2 230		2 230		2 230		2 230		2 230	
Seat height (mm)	h7	1 255		1 255		1 255		1 255		1 255		1 255		1 255	
Length to fork face (mm)	l2	3 151		3 265		3 300				3 350		3 151		3 265	
Overall width (mm)	b1 b2	1 451		1 451		1 451				1 451		1 451		1 451	
Forks length x width x thickness (mm)	b3	1 050 x 150 x 50		1 200 x 150 x 50		1 200 x 150 x 60		1 200 x 150 x 60		1 050 x 150 x 50		1 200 x 150 x 50		1 200 x 150 x 60	
Turning radius (mm)	Wa	2 820		2 865		2 930				2 990		2 820		2 865	
Travel speed, laden / unladen (km/h)		24 / 25													
Lift speed, laden / unladen (mm)		520 / 540	535 / 575	520 / 540	530 / 575	470 / 540	525 / 575	470 / 540	470 / 540	520 / 540	535 / 575	520 / 540	530 / 575	470 / 540	520 / 575
Lowering speed, laden / unladen (mm)		480 / 450				490 / 450				480 / 450				490 / 450	
Max. drawbar pull, laden / unladen (kg)		3 450	3 410	3 470	3 430	3 450	3 410	3 430	3 410	3 450	3 410	3 470	3 430	3 450	3 410
Max. gradeability (%)		35	35.5	32	35	30	30.5	28	30.7	35	35.5	32	35	30	30.5
Engine manufacturer / type		DB58S	D439E	DB58S	D439E	DB58S	D439E	DB58S	D439E	DB58S	D439E	DB58S	D439E	DB58S	D439E
Engine rated power acc. to ISO 1585 (kW/rpm)		67.7 / 2 200	67.7 / 2 300	67.7 / 2 200	67.7 / 2 300	67.7 / 2 200	67.7 / 2 300	67.7 / 2 200	67.7 / 2 300	67.7 / 2 200	67.7 / 2 300	67.7 / 2 200	67.7 / 2 300	67.7 / 2 200	67.7 / 2 300
Maximum torque (N-m/rpm)		324 / 1 600													
Type of drive control		Powershift													
Hydraulic pressure attachment (bar)		140													

Specification values quoted in this specification sheet have been rounded. Performance may vary depending on operating conditions. Products and specifications are subject to improvement and change without prior notice.  
 (1) Mast dimensions refer to a range from the lowest to highest available mast

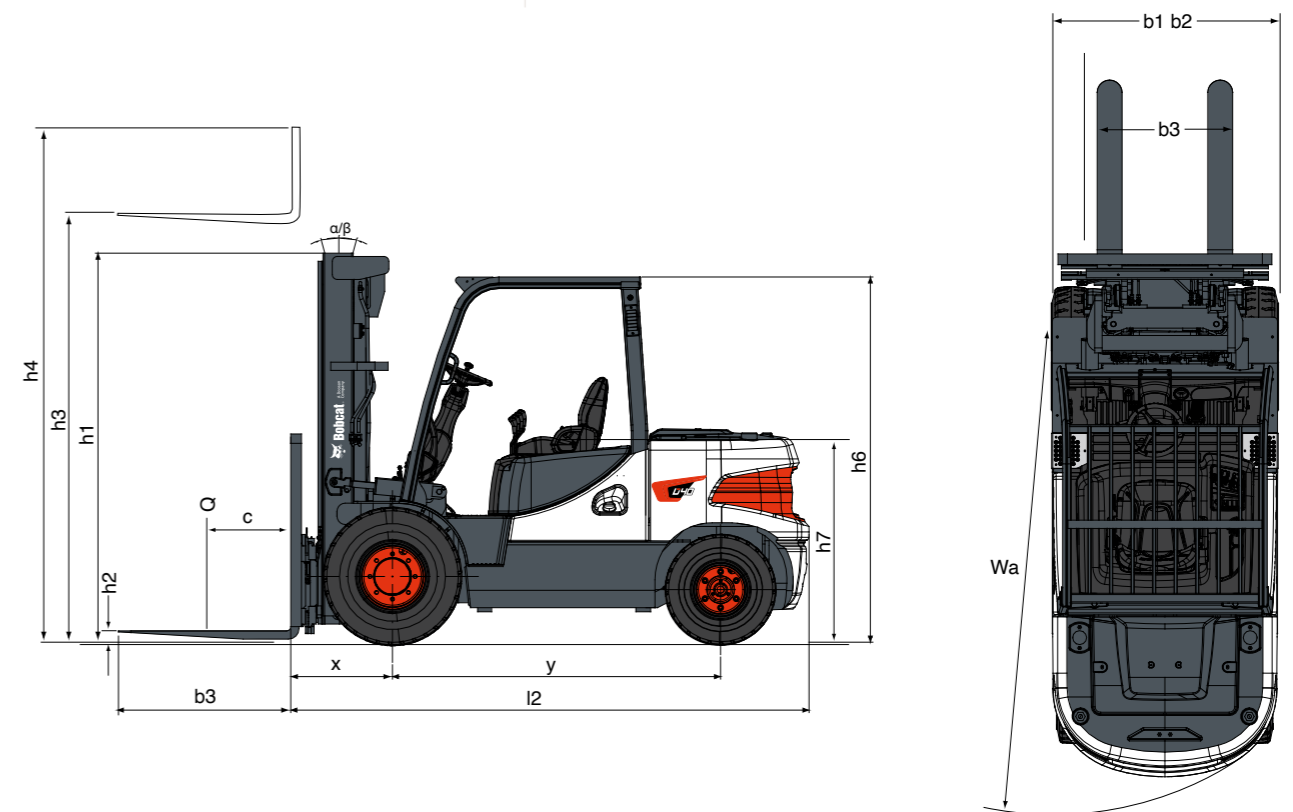
Note: Load capacities are based on the standard chassis without side shifter with load backrest.

# STANDARD EQUIPMENT & OPTIONS

STANDARD EQUIPMENT & OPTIONS		STANDARD EQUIPMENT & OPTIONS	
<b>SAFETY</b>		<b>PRODUCTIVITY</b>	
Operator Sensing System	✓	Power steering	✓
Excellent visibility	✓	High air inlet from overhead guard	✓
Parking brake	✓	Hydrostatic Steering System	✓
Overhead guard	✓	Power Reversal Transmission	✓
2 front LED lights	✓	Auto tilt levelling	•
Load backrest	•	Mono pedal with autoshift controller	•
Front lights with combination lamps	•	Defroster fan for full cab	•
Rear safety light	•	<b>RELIABILITY</b>	
Emergency lamp and switch	•	Oil-cooled disc brakes (ODB)	✓
Back-up alarm	•	Vertical exhaust muffler	✓
<b>ERGONOMICS</b>		Air cleaner	✓
Tilt steering column	✓	Heat shield for battery	✓
Hydraulic levers control	✓	Full floating drive axle	✓
Spacious operator compartment	✓	Pre-cleaner	•
Optimum Pedal System (OPS)	✓	Engine shutdown for power protection	•
Integrated instrument panel	✓	<b>SERVICEABILITY</b>	
Convenience tray	✓	Dual element air cleaner and rain cap	✓
Modular cabin type A, B, C	•	Centralized fuse and relay box	✓
Full cab	•	Easy open side cover and floor plate	✓
Steering wheel knob	•	Fuel cap with key	•
Rear grab bar	•		
Rear-view mirror	•		
Heater & air conditioner	•		
Radio and MP3	•		
Tool kit	•		
Suspension seat	•		
Seat belt interlock	•		

\*This list is based on factory data. Standard or optional can vary for specific countries.

• = option  
 ✓ = standard  
 – = not available





# FINANCING OPTIONS

## 24, 36, OR 48 MONTH FINANCING\*

Take advantage of 24, 36 or 48 month financing programs starting from **0% interest** and improve your cashflow.

Ask your dealer for the financing offers available.

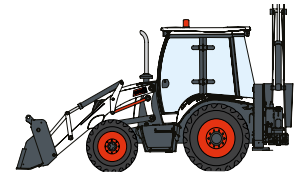
**340 MACHINES / 150 ATTACHMENT FAMILIES / 1 TOUGH ANIMAL**



**SKID-STEER  
LOADERS**



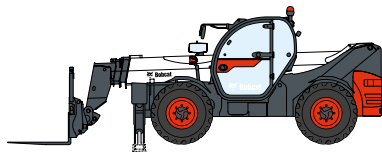
**COMPACT TRACK  
LOADERS**



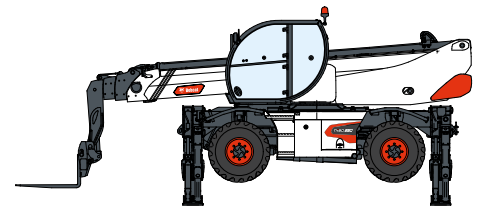
**BACKHOE  
LOADERS**



**FORKLIFTS**



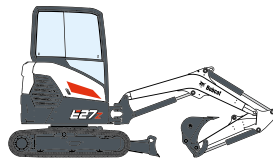
**TELEHANDLERS**



**ROTARY TELEHANDLERS**



**LIGHT COMPACTION  
EQUIPMENT**



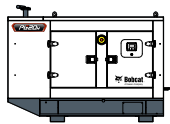
**COMPACT  
EXCAVATORS**



**SMALL ARTICULATED  
LOADERS**



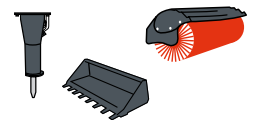
**MINI TRACK  
LOADER**



**GENERATORS**



**AIR COMPRESSORS**



**ATTACHMENTS**

**DOOSAN**

**Bobcat is a Doosan Company.** Doosan is a global leader in construction equipment, power & water solutions, engines, and engineering proudly serving customers and communities for more than a century. | Bobcat and the Bobcat logo are registered trademarks of Bobcat Company in the United States and various other countries. ©2024 Bobcat Company. All Rights Reserved.

[www.bobcat.com](http://www.bobcat.com)

©2024 BOBCAT B4502610-EN (02-24)



**Bobcat®**

\*Financing options may vary by country and dealer. Always ask your dealer about currently available financing options. Terms and conditions may apply.

Doosan Bobcat EMEA, U Kodelky 1810, 263 12 Dobříš, Czech Republic