



B40X-7 / B45X-7 / B50XC-7 / B50X-7

7-SERIES FORKLIFTS

Electric 4.0 to 5.0 ton capacity 4 wheel



Leading the way

The new world class 7-Series trucks from Doosan continue to follow the core Doosan tradition of delivering simple, powerful performance, whilst most of all, delivering the best possible value for our customers.

The new 7 Series of 4 wheel electric counterbalance forklift trucks, continue to follow the core Doosan tradition of delivering simple, powerful performance, whilst most of all, delivering the best possible value for our customers.

The specially designed ergonomic operator compartment keeps the operator in complete control at all times, improving productivity and reducing stress and fatigue.

The new model offers improved visibility and the latest design in ergonomic hydraulic controls. Thanks to an improved durable design, Doosan's new 7 Series electric trucks exceed the highest demands for safe operation.

The latest in AC control systems provide an unbeatable combination of power, performance and reliability. Each parameter is fully adjustable to perfectly match every your individual requirement, providing maximum control and accuracy for every function.

“ Higher lifting and travel speed enables me to reach optimal efficiency in my job ”

PRODUCTIVITY

- Excellent visibility
- Smooth driving sensitivity
- Direction switch on main control valve



“ The robustness of the Doosan truck ensures that even the toughest of jobs gets done ”

RELIABILITY

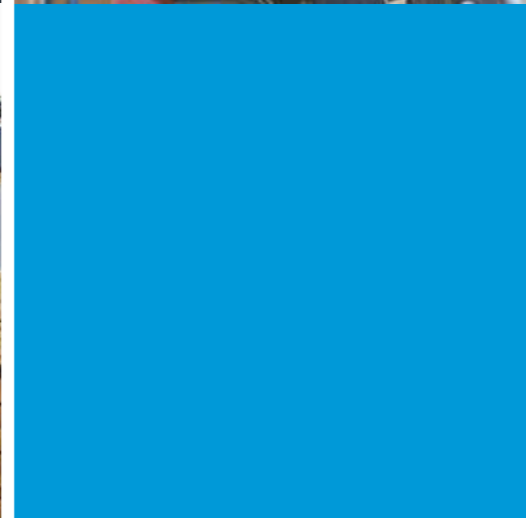
- Reliable AC control
- Durable transaxle
- Durable Oil cooled disc brake



“ The Doosan service support network has never let me down ”

SERVICEABILITY

- Doosan service network coverage
- Quick service response
- Easy to fix design



“ With the reassuring features of Doosan truck, operation is safe and comfortable ”

SAFETY AND ERGONOMICS

- Anti roll back
- Operator Sensing System (OSS)
- Automatic speed control
- ISO3691 Hydraulic locking



Features overview

The Doosan 4-wheel electric counterbalance forklifts provide great power, excellent performance, enhanced safety, driving comfort, outstanding serviceability and reliability.

MAXIMUM PRODUCTIVITY

- Excellent visibility
- Smooth and responsive acceleration
- Direction switch on hydraulic control lever

SAFETY

- Anti roll back
- Automatic speed control
- ISO3691 Hydraulic locking
- Operator sensing system (OSS)
- Emergency switch
- LED lights
- Large panoramic mirror
- Turtle mode



OPTIMAL ERGONOMICS

- Easy and instinctive display
- Convenience tray
- Compact steering wheel
- Adjustable seat
- Adjustable steering column

EXCELLENT RELIABILITY

- Reliable AC controller
- Rugged and durable twin drive axle
- ODB - Oil cooled disc brakes
- IP 43 rated drive & pump motors
- Water and dust proof for outdoor use

GREAT SERVICEABILITY

- Worldwide service network
- Doosan genuine parts
- Easy to access controller room and electric parts
- Easy view

Maximum Productivity



The neatly arranged hydraulic hoses and chains provide clear front visibility through the wide view mast.



Hydraulic lever with directional switch (optional)

The direction switch is located on the lift lever, which makes it easier for the operator to quickly change between forward and backward driving direction.



Productive acceleration & braking

The productive acceleration and braking gives the operator maximum safety and convenience. When starting the truck, the initial acceleration is reduced for safe & comfortable movement. The acceleration increases when driving at mid & high-speed for a more productive operation. An ergonomically positioned brake decreases the braking pedal effort.



Finger tip controls (optional)

Fast, precise and infinitely controllable fingertip control makes the 7-series effortless and efficient.



Excellent visibility

The precisely designed overhead guard profile with angled roof bars provides a clear upward view whilst ensuring ultimate strength for safety. The excellent visibility enables you to work faster and more efficient.

“ Boost your productivity with Doosan ”

Safety



LED lights (optional)

Brighter and last longer than traditional sealed beams or halogen lights.



Emergency switch

The emergency switch can be reached easily when operating the truck.



Large panoramic mirror (optional)

Provides a clear view of the rear working area for the operator, to ensure safe working conditions.



Anti roll back

The controller prevents the forklift from rolling back for 5 seconds when the truck is stopped on a slope.



Automatic Speed Control

The angle sensing information controls the travel speed when turning sharply. It automatically reduces the travel speed to the optimal speed when cornering, reducing the risk of accidents or damage.



OSS (Operator Sensing System)

Whenever the operator leaves the seat, the truck travel and mast lifting functions will stop. This systems avoids any unintended forklift movements when the operator is not seated.



Mast Lowering Interlock & Tilt lock (ISO3691)

When the operator leaves the truck unattended, the hydraulic locking system prevents unintentional lowering and tilting of the mast. It safeguards the truck, the load and the work array.

“ Doosan takes safety to the next level ”

Safety & Optimal ergonomics



Safety



Turtle mode

By pushing the turtle mode button when the truck operates in a warehouse, the truck travel speed will slow down to a predefined travel speed setting, without impacting the lifting speed. This mode ensures safely manoeuvring in delicate operating situations.



Easy and instinctive instrument panel

Operators can control the truck's performance settings during operation, simply by navigating the instrument panel.



Anti slip step & Entry bar

The anti slip step and entry bar help the operator to easily mount and unmount the forklift.

Ergonomics



Spacious operator leg room

The thick and large rubber floor mat & the rounded hood offer comfort to the operator's compartment.



Convenience tray

The convenience tray was conceived by adopting combinations of new and old favorites to give the best operator experience. Some of the features include: a large cup holder, a USB port, 12V power outlet, and a clipboard holder.



Premium adjustable seat (Grammer seat, optional)

The full suspension comfort seat is fully adjustable to accommodate every individual preference. Additional heating system is also available for better operator convenience.



Adjustable column

The operator can adjust the position of the column for convenience and comfort.



Small steering wheel

The steering wheel has a compact design that reduces operator fatigue.

“ Infinite **adjustability**, optimized **controllability** and exceptional **reliability** makes the new Doosan 7-Series, the operator's first choice. ”

Excellent Reliability

The 7 Series provide smooth and durable operation in various applications.

With the reliable AC controller and the optimized design, Doosan's new machine operates very efficiently.



Reliable AC controller

Curtis AC controllers provide an unbeatable combination of power, performance and functionality. The IP 65 rated controller is very reliable and well proven in tough applications.



IP43 dust and water protection drive and pump motor

Maintenance free electric motors by eliminating motor brushes and commutators. The new sealed motors are rated to IP43.



ODB (Oil cooled Disc Brake)

Virtually maintenance-free, ODB is standard equipment on the B45X-7. The enclosed brake system eliminates outside contamination significantly extending the brake life up to 5 times longer when compared to conventional shoe brakes.



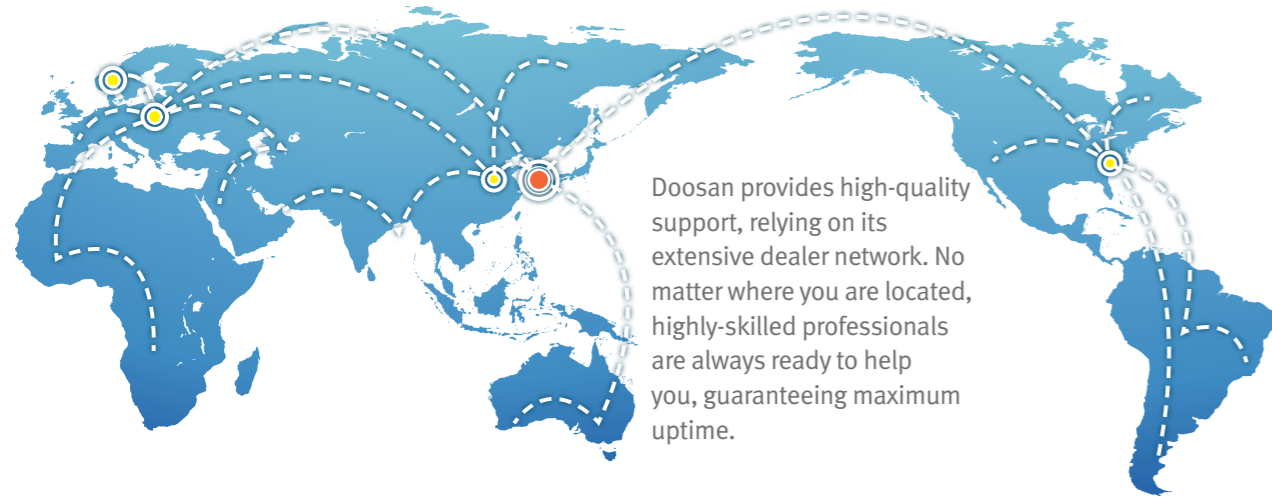
Rugged and Durable Twin Drive Axle

Twin drive axle is controlled by an integrated drive controller. The twin drive axle effectively transfers the power and torque of the drive motor to the final drive for both smooth and quiet operation.

Great Serviceability

Worldwide service network

- Head quarter
- Overseas offices and service centers



Doosan provides high-quality support, relying on its extensive dealer network. No matter where you are located, highly-skilled professionals are always ready to help you, guaranteeing maximum uptime.



Doosan genuine parts

The warehouse supplies high quality Doosan parts to your local dealer.



Wide open hood cover with locking type gas spring

Toolless side panel



Easy to access electric components



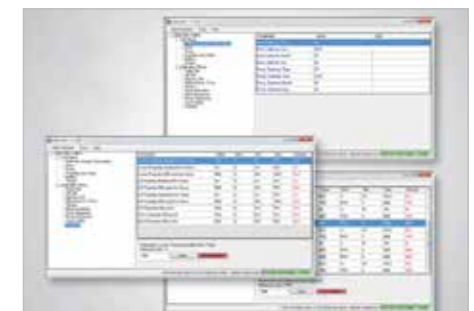
Easy accessible controller room

No need to open the hood to access the controller to change settings or connecting the diagnostics tool.



Brake oil indicator

Check the brake oil level and the display warning indicator on the instrument panel. The reservoir can be accessed easily.



Easy view

Simply by connecting the laptop to the forklift, a technician can adjust all the parameters to the operator's wishes. Service can happen easy and fast.





DOOSAN IS THE PARTNER YOU CAN COUNT ON



Main Specifications

MAJOR SPECIFICATION		B40X-7	B45X-7	B50XC-7	B50X-7
Load capacity/rated load	kg	4000	4500	4990	5000
Load centre distance	mm	500	500	500	500
Load distance, centre of drive axle to fork	mm	572	572	572	572
Wheelbase	mm	2000	2000	2000	2000
Aisle width for pallets 1000 x 1200 crossways	mm	4392	4392	4417	4417
Aisle width for pallets 800 x 1200 lengthways	mm	4592	4592	4617	4617
Turning radius	mm	2620	2620	2645	2645
Travel speed, loaded / unloaded	km/h	15 / 16	15 / 16	15 / 16	15 / 16
Lift speed, loaded / unloaded	mm/s	0.33 / 0.47	0.33 / 0.47	0.31 / 0.47	0.31 / 0.47
Lowering speed, loaded / unloaded	m/sec	0.48 / 0.45	0.48 / 0.45	0.48 / 0.45	0.48 / 0.45
Maximum drawbar pull, loaded / unloaded, 5 minute rating	N	18620 / 18620	18620 / 18620	18620 / 18620	18620 / 18620
Maximum gradeability, loaded / unloaded, 5 minute rating	%	17 / 27	16 / 26	15 / 25	15 / 25
Battery voltage/nominal capacity K5	V/Ah	80 / 720	80 / 720	80 / 720	80 / 720

Standard Features and Optional Extras

SAFETY & STABILITY

OSS (Operator Sensing System)	Standard features
Anti roll back	Standard features
Low battery warning alarm	Standard features
Mast lowering Interlock & Tilt lock (ISO 3691)	Standard features
Emergency stop switch	Standard features
Automatic speed control	Standard features
Easy Entry Grab Bar	Standard features
Large entry step with anti-slip pattern	Standard features
Panoramic mirror	Optional extras
LED Lights	Optional extras

OPERATOR COMFORT (ERGONOMICS)

Large & angled floor plate (leg room) with rubber mat	Standard features
Rounded design battery hood cover	Standard features
Easy to read instrument panel	Standard features
Adjustable tilt steering column & easy grip (φ280 size) steering wheel	Standard features
Large cup holder, usb port & 12v electric jack, clip board	Standard features
Steering wheel knob	Optional extras
Low Overhead Guard	Optional extras
Mono Pedal	Optional extras
Premium seats : Grammer seat	Optional extras

PRODUCTIVITY

Excellent visibility through mast	Standard features
Rounded design counterweight	Standard features
Hydraulic cushioned valve in secondary cylinder (FFL & FFT)	Standard features
Smooth and responsive acceleration	Standard features
Fingertip Controls	Optional extras
Battery Side Lift In and Out	Optional extras
Battery Roll In and Out	Optional extras
Auto tilt leveling	Optional extras
Direction switch on main control valve	Optional extras

DURABILITY




Full AC system chassis	Standard features
IP65 Rated curtis controller	Standard features
Robust frame structure & strong structure overhead guard	Standard features
Oil-cooled disc brakes (ODB)	Standard features
IP 43 rated drive & pump motors	Optional extras
IP 54 rated drive & pump motors	Optional extras
SERVICEABILITY	
Easy to access controller	Standard features
Wide open battery hood cover	Standard features
Toolless side cover	Standard features

Standard features

Optional extras

* Remark : This list is based on factory data. Standard or optional can vary for specific countries.



-  Production Subsidiary
-  Sales Subsidiary
-  Parts Depot Center

B50X-7-181107v1EN (November 2018)



Doosan Industrial Vehicle Europe nv

Europark-Noord 36A
9100 Sint-Niklaas
Belgium

Tel.: +32 3 760 09 87
Fax: +32 3 760 09 89
Website: www.doosan-iv.eu

Authorized Dealer

--