

**DOOSAN**

B60NX/B70NX/B80NX

## **NX-SERIES FORKLIFTS**

Electric 6.0 to 8.0 ton capacity





## Introduction



Doosan has expanded its high-capacity electric forklift range with the B6oNX Series.

By focusing on single shifts and applications with lower energy demand, we developed a truck with all the necessities and comfort you need but at a competitive price.

***You don't need to spend big to get the job done.***

This 80-volt dual drive forklift is available with capacities from 6 up to 8 tonnes on a load center of 600 millimeters.

You get the most comfortable and safe working environment with zero emissions and a low noise level. In addition, the trucks are easy to access, have good visibility, and are easy to drive.

Why a Doosan electric forklift is the right fit for your industry?

- Low noise level
- Environment friendly / zero emission
- Reduced total cost of ownership (TCO)



## Performance & General info



### Good visibility through roof

Keep a good view of your load thanks to the great visibility through the roof of the operator compartment.



### Oiled cooled disc brakes

Oil cooled disc brakes have a 5 times longer service interval than conventional shoe brakes, and are virtually maintenance free.



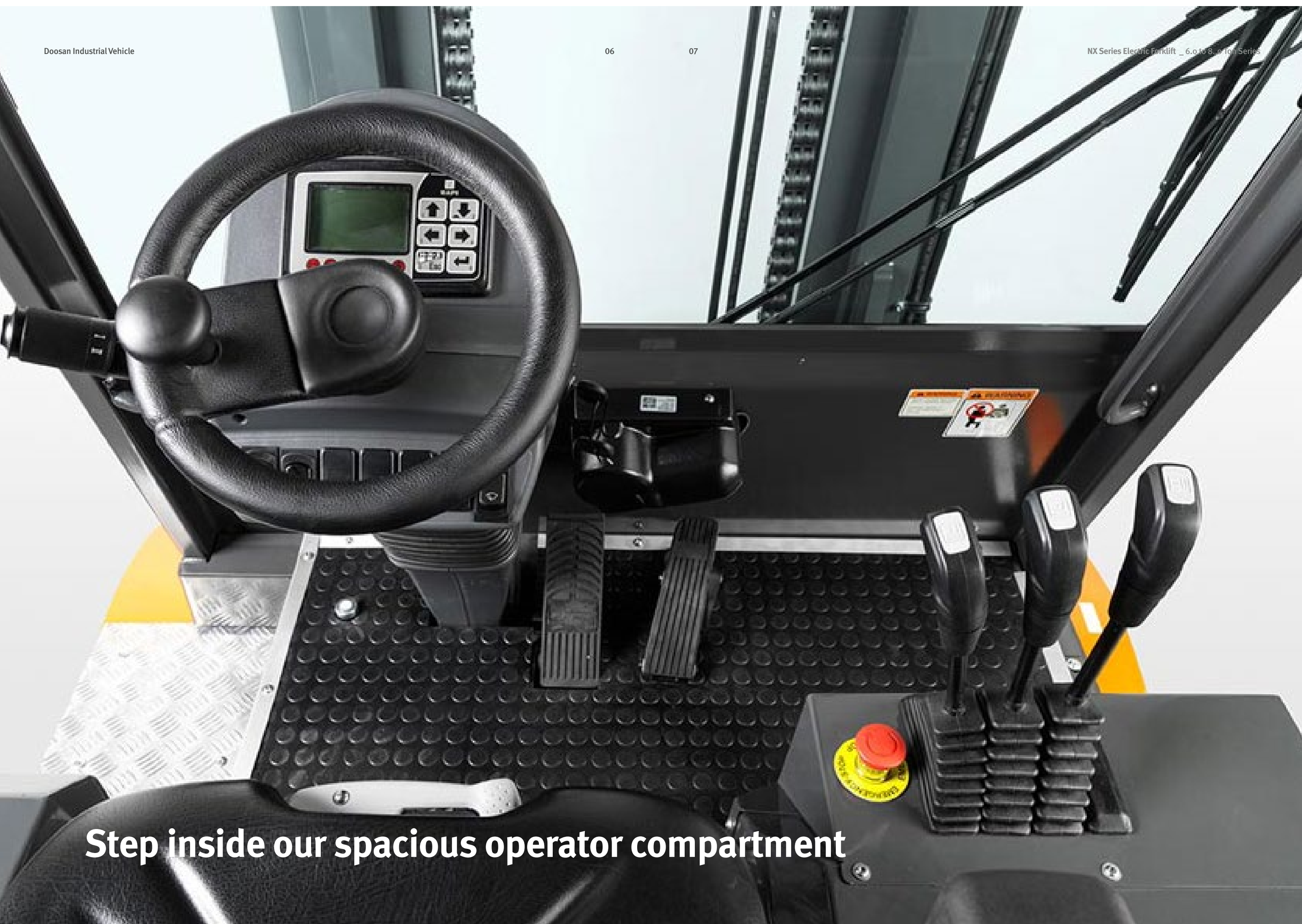
### 360 ° visibility

360 degrees visibility thanks to the large glass around the operator. The high visibility makes driving a forklift with a load safer and contributes to even better productivity and driving experience.



### Dual drive motor

The 80V electronic management of bi-traction motors, lifting motor, pump and steering, give you the performance you need during your shift.



**Step inside our spacious operator compartment**



## Optimal Ergonomics

### OPTION MP3 radio player

Radio with built-in mp3 player is optionally available.



### Adjustable column

Steering column is adjustable in vertical and horizontal direction according to the drivers preference and comfort.



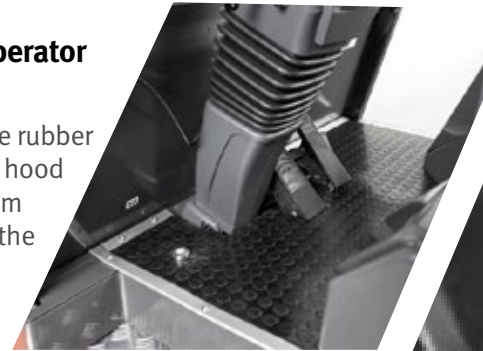
### OPTION HVAC System

This system offers integrated heating/cooling/ventilation control, allowing automatic heating/cooling temperature control.



### Spacious operator leg room

The thick and large rubber floor mat, rounded hood and spacious legroom offer great comfort to the operator.



### Premium Grammar

The full suspension (air suspension: optional) comfort seat is fully adjustable to accommodate all individual preferences



### OPTION Fingertip Console

2-axis cross lever or ergonomic fingertips available. It ensures accurate control and low fatigue during a long shift.



### USB socket

USB socket available as standard.



## Safety



a **higher** level of safety  
leads to **better** productivity



Extra Front LED lights **OPTION**

Brighter and last longer than traditional sealed beams or halogen lights.



Strobe and blue safety lights

Increased safety for the workplace with maximum visibility. (safety lights are optional)



Panoramic mirror

Keep an eye on what's going on around you thanks to the panoramic mirror and increase safety in the workplace.



Electric parking brake

The parking brake can be engaged with a switch or automatically activated.



Rear view camera **OPTION**

Workplace safety is ensured by maximizing rear visibility.



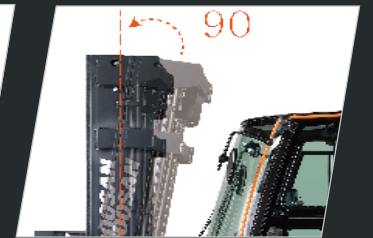
Large entry step with anti-slip pattern

Low height of the 1st and 2nd steps to allow the operator to get on and off the truck easily and safer. Multiple entry grab bars are equipped to ensure a 3 points entry.



Weight scale **OPTION**

With the optional weight scale you won't have a chance to overload your forklift avoiding dangerous circumstances

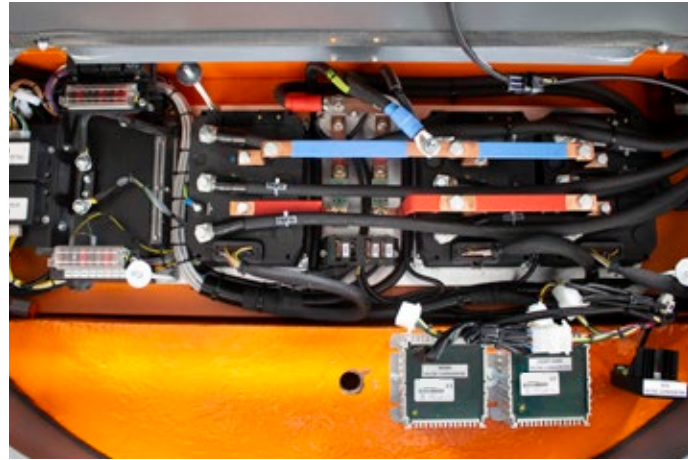


Auto tilt **OPTION**

By pressing on the auto tilt button, the mast will automatically move to an upward position.



## Excellent reliability



### Easy access controller

The IP65 rated controller is very reliable, well proven in tough applications and easily accessible.

“**Doosan** makes your job easier, and enables you to **save your costs and time**”



### Battery change system

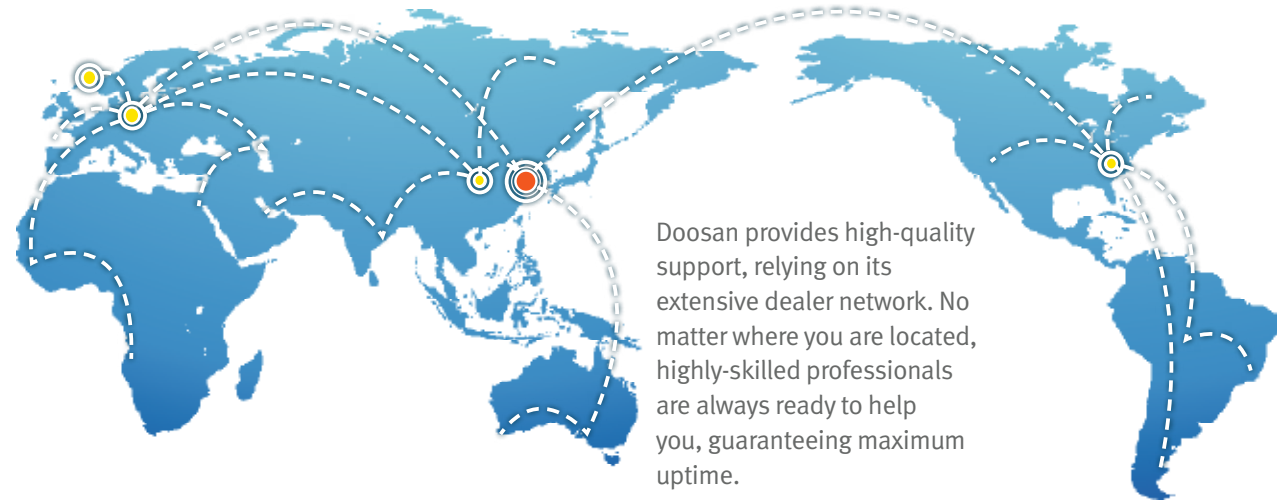
Thanks to detachable backplate, the battery change for multiple shifts is handier.



## Great Serviceability

### Worldwide service network

- Head quarter
- Overseas offices and service centers



### Doosan genuine parts

The warehouse supplies high quality Doosan parts to your local dealer.



**Reliable Partner**



# Main Specifications

## MAJOR SPECIFICATION

Load capacity/rated load	kg
Load centre distance	mm
Load distance, centre of drive axle to fork	mm
Wheelbase	mm
Aisle width for pallets 1000 x 1200 crossways	mm
Overall width (single tires)	mm
Turning radius	mm
Travel speed, loaded / unloaded	km/h
Lift speed, loaded / unloaded	mm/s
Lowering speed, loaded / unloaded	m/s
Noise level at operators ear	dB
Maximum gradeability, loaded / unloaded, 5 minute rating	%
Battery voltage/nominal capacity K5	V/Ah

B60NX	B70NX	B80NX
6,000	7,000	8,000
600	600	600
650	650	650
2,110	2,210	2,310
4,865	5,065	5,365
1,535/1,900	1,535/1,900	1,650/1,900
2,715	2,915	3,215
15 / 15	15 / 15	15 / 15
280 / 320	250 / 320	220 / 320
0,4/0,3	0,4/0,3	0,4/0,3
70	70	70
17 / 18	15 / 17	13 / 16
80/930-1,085	80/930-1,085	80/930-1,085

# Standard Features and Optional Extras

## SAFETY & STABILITY

OSS (Operator Sensing System)	Standard features
Easy Entry Grab Bar	Standard features
Large entry step with anti-slip pattern	Standard features
Electronic Parking Brake	Standard features
Front LED Lights	Standard features
Cornering speed control	Standard features
Emergency switch	Standard features
Backup alarm	Standard features
Amber strobe lights	Standard features
Seat Belt Interlock	Optional extras
Extra front LED lights	Optional extras
Rear view camera with flat color display	Optional extras
Safety light Front and/or Rear	Optional extras
Panoramic and/or side mirrors	Optional extras

## OPERATOR COMFORT (ERGONOMICS)

Easy-to-read instrument panel	Standard features
Overhead guard	Standard features
Adjustable steering column	Standard features
Grammer suspension seat	Standard features
Steering wheel knob	Standard features
USB port	Standard features
Fingertip console	Optional extras
Mini finger axis	Optional extras
Modular cabin type B/C/D	Optional extras
Rear grab bar with horn	Optional extras
Grammer, air suspension seat	Optional extras
Heater	Optional extras
Heater & air conditioner (HVAC)	Optional extras
Audio (DAB type Radio, MP3 )	Optional extras

## PRODUCTIVITY

Excellent visibility through mast	Standard features
Smooth and responsive acceleration	Standard features
Weight scale	Optional extras
Double pedal with brake in the center	Optional extras
Auto tilt leveling	Optional extras

## RELIABILITY




Full AC system chassis	Standard features
IP65 Rated controller	Standard features
Robust frame structure & strong structure overhead guard	Standard features
Oil-cooled disc brakes (ODB)	Standard features
Under protection	Optional extras
Oil cooling exchange	Optional extras

- Standard features
- Optional extras

\* Remark : This list is based on factory data. Standard or optional can vary for specific countries.





-  Production Subsidiary
-  Sales Subsidiary
-  Parts Depot Center

**DOOSAN**

Doosan Industrial Vehicle Europe nv  
 Europark-Noord 36A  
 9100 Sint-Niklaas  
 Belgium  
 Tel.: +32 3 760 09 87  
 Fax: +32 3 760 09 89  
 Website: [www.doosan-iv.eu](http://www.doosan-iv.eu)

B60NX-220923V1EN (September 2022)

Authorized Dealer