



Bobcat[®]

One Tough Animal[®]

POWERED PALLET TRUCKS

Warehouse Equipment — Walkie, Ride-on platform

🌐 EMEA

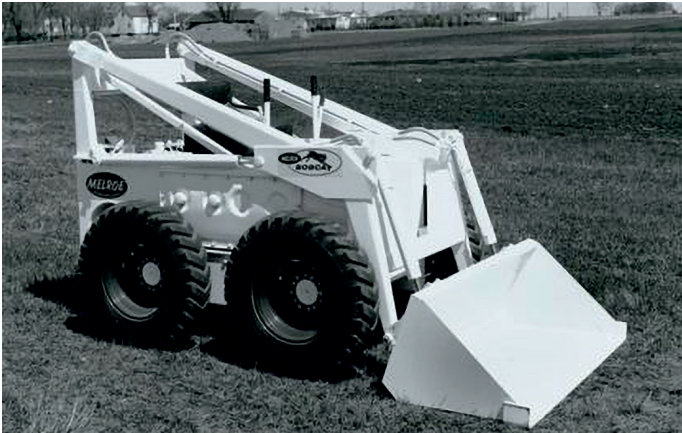


ONE TOUG ANNIM

► **OUR MISSION**

We empower operators to accomplish more, while working in the toughest conditions and tightest situations. When our customers have the will, we provide the way.

INTRODUCTION



▶ BOBCAT'S HISTORY

In 1958, Melroe Manufacturing Company introduced a compact front-end loader that evolved quickly into the M400, the world's first true skid steer loader. The company soon adopted what became the world-famous 'Bobcat' brand – and its success paved the way for the global compact equipment industry we know today.

▶ YEARS OF EXPERIENCE

In 2021, Bobcat furthered its reach by acquiring Doosan Industrial Vehicle, increasing its capacity to provide customers with comprehensive business solutions. Doosan's expertise in material handling and warehouse equipment, dating back to its inaugural forklift in 1968, enabled the company to establish a global presence with 400 dealers across 93 countries.



▶ BOBCAT TODAY

Now, with a diversified portfolio that includes forklifts and warehouse equipment, Bobcat serves as a one-stop solution for intralogistics needs, from loading shipping containers to optimizing warehouse operations. Produced in its South Korean factory, Bobcat's material handling machines offer the precision and durability customers expect.



Warehouse equipment – Powered Pallet trucks 3

TOUGH, AGILE & SAFE

▶ THE RIGHT CHOICE FOR YOUR BUSINESS

Unlock the synergy of efficiency and durability with Bobcat. Our 1.8 to 2-ton powered pallet trucks are built tough and versatile, empowering your business operations for years of uninterrupted productivity.



▶ ULTIMATE PRODUCTIVITY

Discover our compact, heavy-duty capacity walkie and ride-on pallet trucks. Choose options with up to 2 tons of capacity and experience excellent daily performance with a high-speed AC-powered drive motor.

P. 6-7



▶ ALL-DAY COMFORT

Experience comfortable operation with standard features like a tiller head and display monitor, ensuring effortless control for a comfortable experience from start to finish.

P. 8-9



▶ DRIVEN BY SAFETY
Feel secure during shifts with safety features like automatic speed reduction, PIN code access, override function, and more.
P. 10–11



▶ DURABLE DESIGN
Our pallet trucks feature a robust design for durability in every task. They come with superior component protection, high-quality bearings, and a lifetime-guaranteed frame structure.
P. 12–13



OUTSTANDING PRODUCTIVITY



▶ MECHANICAL STEERING

Mechanical steering handles pallets with precise movements, allowing operators to place loads with effortless accuracy.



▶ SUB-ZERO STORAGE (-30 °C)

Thanks to their specialized frame coating and hydraulic oil, these trucks continue running smoothly in temperatures as low as -30 °C, ensuring effortless and efficient work in cold conditions.



▶ TANDEM LOAD WHEELS AND EASY PALLET ENTRY

Contoured fork design and tandem load wheels allow easy entry into, and exit from, palletized loads.



▶ AC POWER

Fully programmable performance parameters enable full customization of acceleration, top speed, and braking.

COMFORT & CONTROLS



▶ ERGONOMIC TILLER CONTROL

Designed for comfort and flexibility, the tiller arm features dual butterfly switches suitable for both left and right-handed operators.



▶ MONITORING DISPLAY

Experience uninterrupted operations with real-time display energy and status monitoring. Stay informed about essential updates for a smooth workflow without any disruptions.



▶ ENJOY ULTIMATE CONTROL

Our pallet trucks offer both central and lateral controls, ensuring seamless maneuvering in any space or warehouse layout.



▶ FOLDABLE PLATFORM

The foldable platform enables operators to adjust to their preferred height, enhancing posture and reducing strain during extended operation. Moreover, the platform facilitates convenient access to loads in tight spaces.



▶ ACCESSIBLE INSTRUMENT PANEL

The easy-to-read instrument panel displays all key truck parameters and settings.



▶ INTEGRATED CONVENTIONAL CHARGER

No more worries about misplacing or setting up an external charger every time the truck needs to charge. This saves time and prevents the hassle of having to manage multiple chargers.



Warehouse equipment – Powered Pallet trucks 9

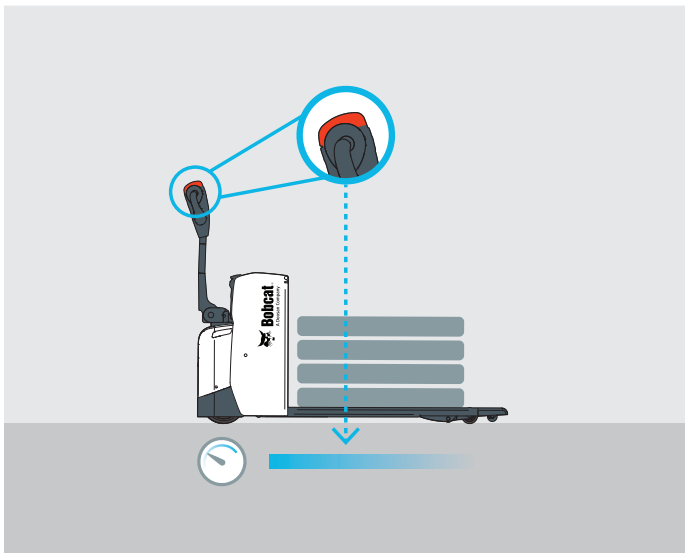
SAFETY IN EVERY MOVE

▶ ADVANCED PROTECTION FOR YOU AND YOUR OPERATION

Bobcat warehouse equipment has safety embedded in its DNA. Packed with tons of features that protect your health and your investment, these machines give you peace of mind in every task, every day.

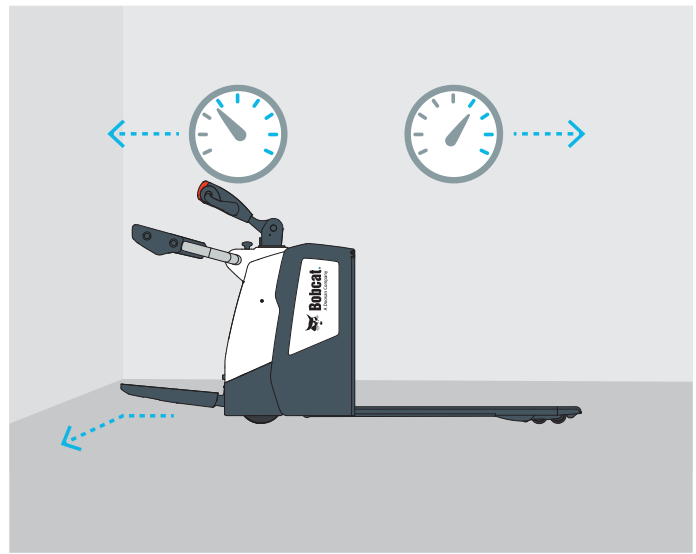
▶ OVERRIDE FUNCTION

With the simple push of a button on the tiller head, this feature offers more precise control in confined spaces by slowing down the truck while handling loads.



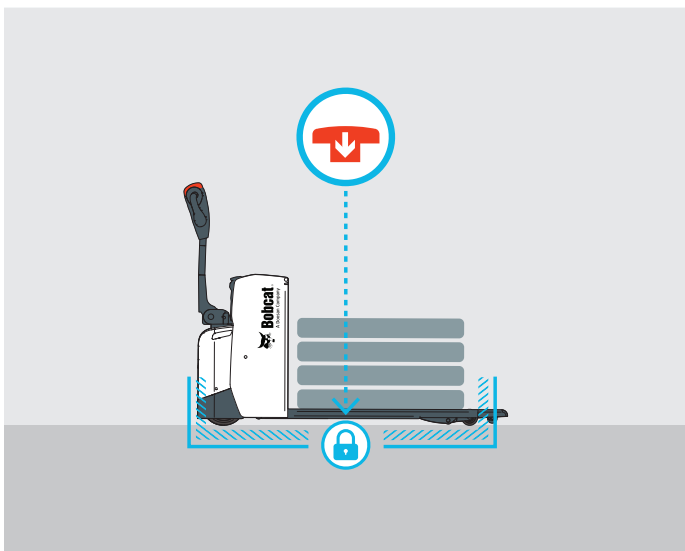
▶ SPEED-REDUCING KIT FOR CORNERING (BPR20S-7)

When approaching and navigating corners, this adjustment ensures smoother and more secure operations, reducing the likelihood of accidents and potential damage to the machine.



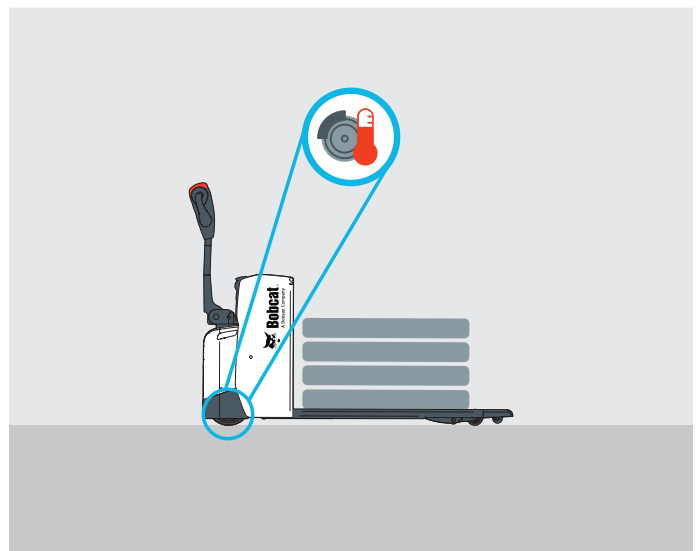
▶ EMERGENCY SWITCH

Operators can quickly deactivate the truck by pressing the emergency switch, reducing the time it takes to identify the issue and take necessary action.



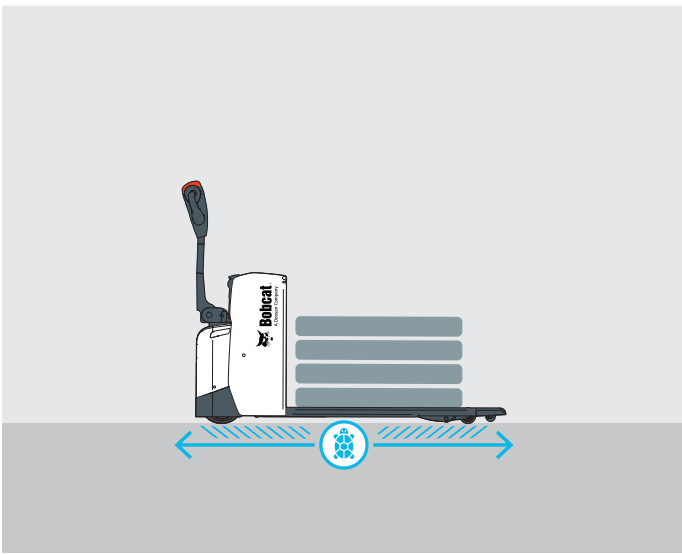
▶ MAGNETIC BRAKE HEATING SYSTEM

Minimize accidents and risks with the magnetic brake heating system, which keeps the brakes warm for optimal performance even in cold conditions.



▶ TURTLE SPEED SWITCH

The turtle speed switch allows extremely slow and controlled movement, offering greater accuracy and caution. This feature proves useful when handling fragile or sensitive materials, or when navigating confined spaces that require precise control.



▶ PIN CODE ACCESS

By protecting the machine from unauthorized use, pin code access adds security to your job site.



▶ LOAD BACK REST

The load back rest provides a protective barrier between the operator and the load, minimizing the possibility of loads sliding back and causing injuries.



▶ ENCAPSULATED BRAKE

The encapsulated brake is designed to withstand dust, dirt, or moisture of harsh environments – ensuring reliable and safe performance.



BUILT TO LAST

▶ EXCELLENT RELIABILITY

Thanks to a robust design, powerful AC motor, and combined bearings, Bobcat warehouse equipment is built tough to provide you with maximum uptime and dependability.



THERE'S NO TIME FOR DOWNTIME. STAND UP TO EVERY TASK THAT COMES YOUR WAY, DAY AFTER DAY.



▶ LIFETIME WARRANTY

Bobcat develops each machine to the highest standards of quality and durability. That's why we provide a lifetime guarantee on the frame structure (10 years) to ensure our trucks deliver maximum reliability and usage.



▶ EXTENSIVE DEALER NETWORK

You can rely on our network of dealers and service partners who are always ready to help you.

▶ BOBCAT GENUINE PARTS

Quality components delivered to our dealers guarantee that all of our equipment is built to last, withstand the toughest conditions, and provide reliable performance.

STANDARD EQUIPMENT & OPTIONS

STANDARD EQUIPMENT & OPTIONS			
	BPL18/20S-7	BPM20S-7	BPR20S-7
PRODUCTIVITY			
Display to monitor energy and machine status	✓	✓	✓
Mechanical steering	✓	✓	✓
Electrical steering, incl. speed reduction while cornering	–	–	✓
Tandem load wheels	•	✓	✓
Integrated charger 24V/30A	•	•	–
Cold storage version (down to -30 °C)	•	•	•
Special frame coating	•	•	•
Greasable cross-bearings with special lubricant (down to -30 °C)	–	–	•
Special hydraulic oil (down to -30 °C)	–	–	•
Magnetic brake heating system	•	•	•
RELIABILITY			
Stainless steel axles and bolts	•	•	–
Steel cover	•	–	•
Vulkollan™ drive wheels with tread	•	•	–
PEVOSOFT™ drive wheels	•	•	–

STANDARD EQUIPMENT & OPTIONS			
	BPL18/20S-7	BPM20S-7	BPR20S-7
FORKS			
980 / 520 mm	•	•	•
980 / 680 mm	•	•	•
1 150 / 520 mm	•	•	✓
1 150 / 680 mm	–	–	•
1 195 / 520 mm	✓	✓	–
1 195 / 680 mm	•	•	–
SAFETY			
Pin code access	✓	✓	✓
Turtle speed switch	✓	✓	–
Load Back rest 1 400 mm	•	•	–
Load Back rest 1 700 mm	•	•	–
Speed reduction kit for cornering	–	• ¹	–
Encapsulated brake	•	•	• ²

¹ not necessary to order with electrical steering
² only for electrical steering

*This list is based on factory data. Standard or optional can vary for specific countries.

• = option ✓ = standard – = not available



Robust design



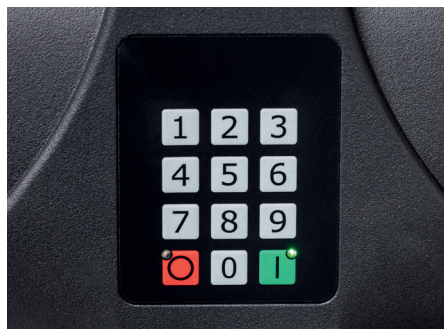
Tandem load wheels



Turtle speed and emergency switch



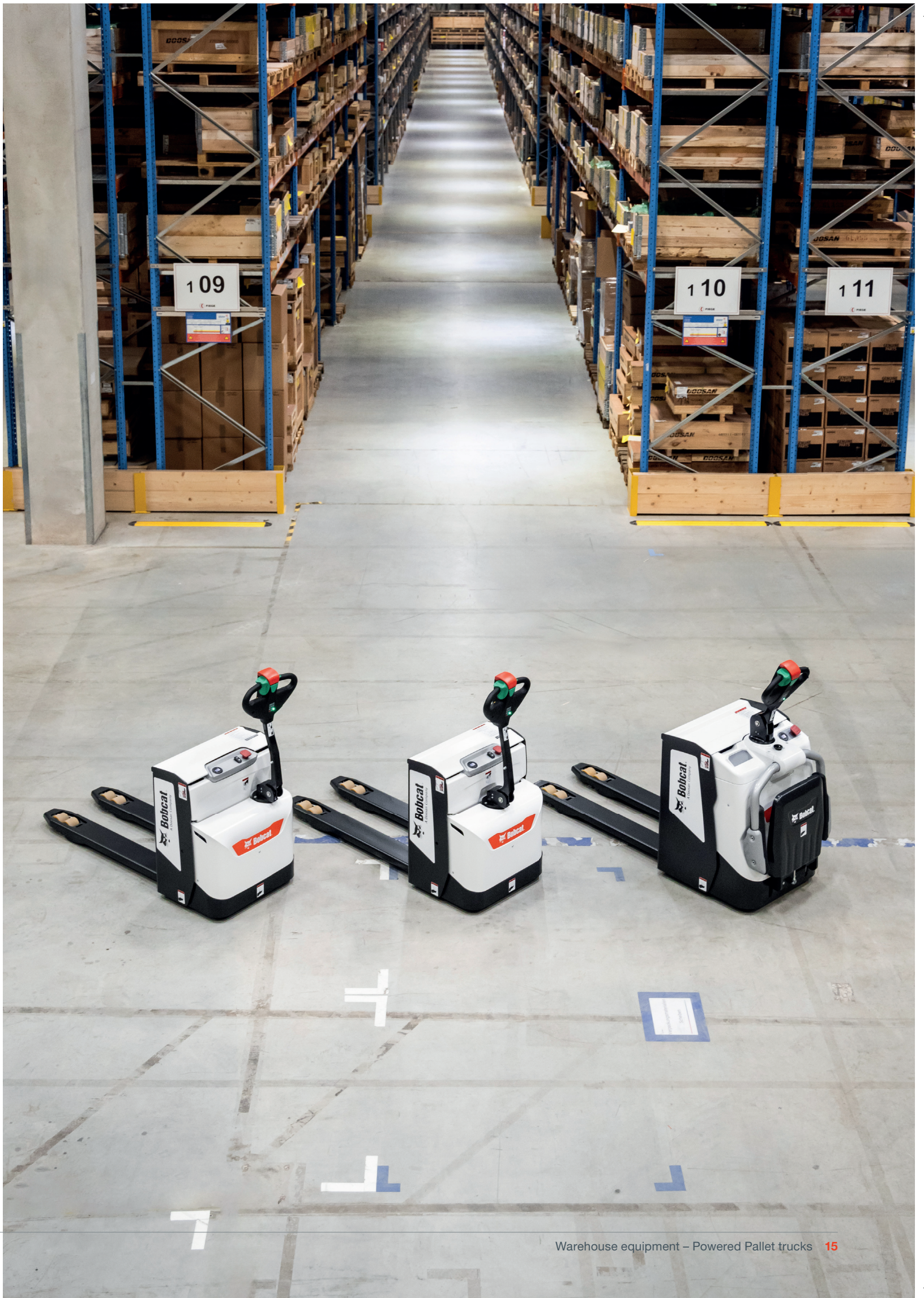
Reliable Curtis AC controller



Pin code access



Magnetic brake heating system



MAIN SPECIFICATIONS

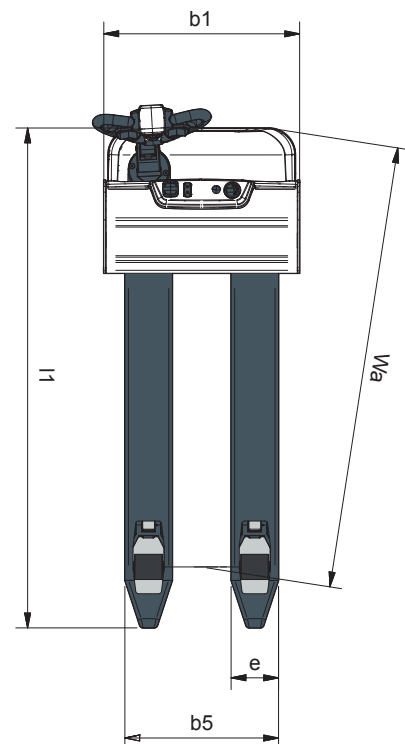
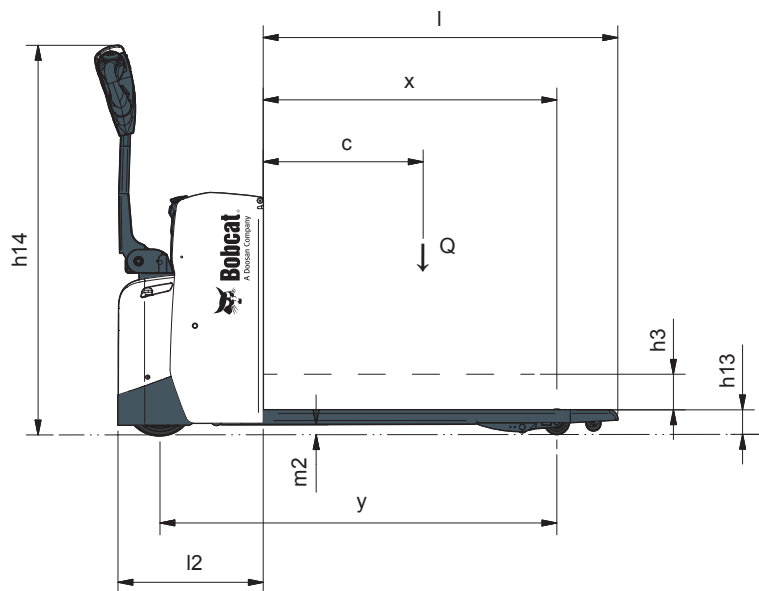
TECHNICAL DATA ACCORDING TO VDI 2198			
SPECIFICATIONS		BPL18S-7	BPL20S-7
Drive		electric	
Operator type		walkie, lateral drive	
Load capacity / rated load center (kg)	Q	1 800	2 000
Load center (mm)	c	600	
Load distance (mm)	x	990	
Wheelbase (mm)	y	1 337	
Tires		Vulkollan™	
Load wheel (mm)		ø85 / 78	
Support wheel (mm)		ø125 × 50	ø125 × 50
Tread, front (mm)	b10	385	
Tread, rear (mm)	b11	358	
Lift height (mm)	h3	120	
Height tiller, in drive position (mm)	h14	1 260	
Height, lowered (mm)	h13	85	
Overall length (mm)	l1	1 683	
Length to forkface (mm)	l2	490	
Overall width (mm)	b1	660	
Fork dimensions (mm)	e/l	160 / 1 195	
Distance over forks (mm)	b5	520	
Ground clearance, center of wheelbase (mm)	m2	35	
Aisle width for pallets 800 × 1 200 lengthways (mm)		2 128	
External turning radius (mm)	Wa	1 476	
Travel speed, loaded (km/h)		5.66	
Max. gradeability, loaded / unloaded (%)		8 / 10	
AC – drive motor (kW)		1	
DC – lift motor (kW)		1.2	
Battery acc. to DIN 43535 A/B/C/no		no	
Battery voltage, nominal capacity K5 (V/Ah)		24 / 230	
Battery weight (kg)		210	

Specification values in this sheet have been rounded. Performance may vary depending on operating conditions. Products and specifications are subject to improvement and change without prior notice.



DIMENSIONS

► BPL18/20S-7



MAIN SPECIFICATIONS

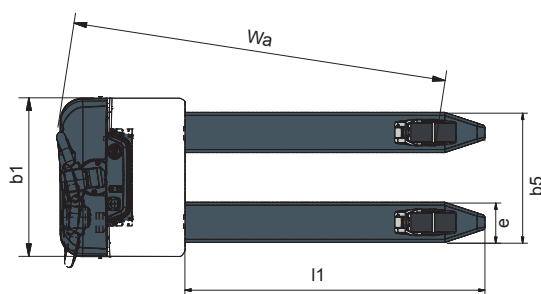
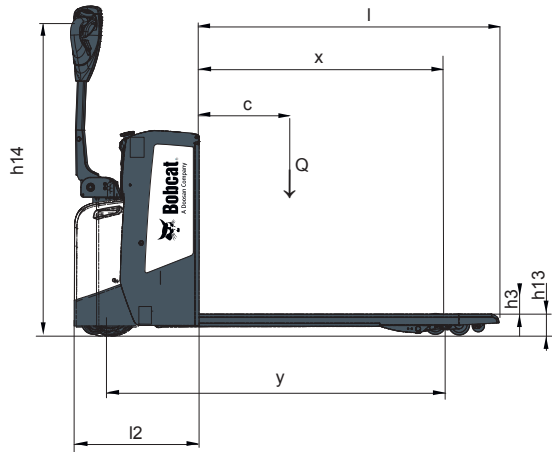
TECHNICAL DATA ACCORDING TO VDI 2198			
SPECIFICATIONS		BPM20S-7	BPR20S-7
Drive		electric	
Operator type		walkie, middle drive	walkie, middle drive, platform
Load capacity / rated load center (kg)	Q	2 000	
Load center (mm)	c	600	
Load distance (mm)	x	990	950
Wheelbase (mm)	y	1 350	1 546
Tires		Vulkollan™	
Load wheel (mm)		ø85 / 78	
Support wheel (mm)		ø100 × 40	ø125 × 50
Tread, front (mm)	b10	419	471
Tread, rear (mm)	b11	358	
Lift height (mm)	h3	120	
Height tiller, in drive position (mm)	h14	1 260	1 232
Height, lowered (mm)	h13	85	
Overall length (mm)	l1	1 699	1 812
Length to forkface (mm)	l2	503	662
Overall width (mm)	b1	660	700
Fork dimensions (mm)	e/l	160 / 1 195	160 / 1 150
Distance over forks (mm)	b5	520	
Ground clearance, center of wheelbase (mm)	m2	35	
Aisle width for pallets 800 × 1 200 lengthways (mm)		2 128	
External turning radius (mm)	Wa	1 497	1 664
Travel speed, loaded (km/h)		5.66	8 / 9.5
Max. gradeability, loaded / unloaded (%)		8 / 10	6 / 8
AC – drive motor (kW)		1	2.5
DC – lift motor (kW)		1.2	1
Battery acc. to DIN 43535 A/B/C/no		no	DIN43535B
Battery voltage, nominal capacity K5 (V/Ah)		24 / 230	24 / 375
Battery weight (kg)		210	300

Specification values in this sheet have been rounded. Performance may vary depending on operating conditions. Products and specifications are subject to improvement and change without prior notice.

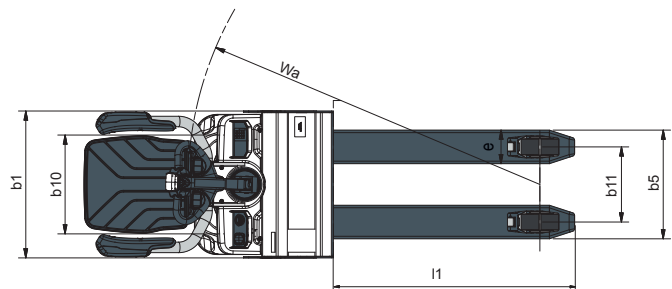
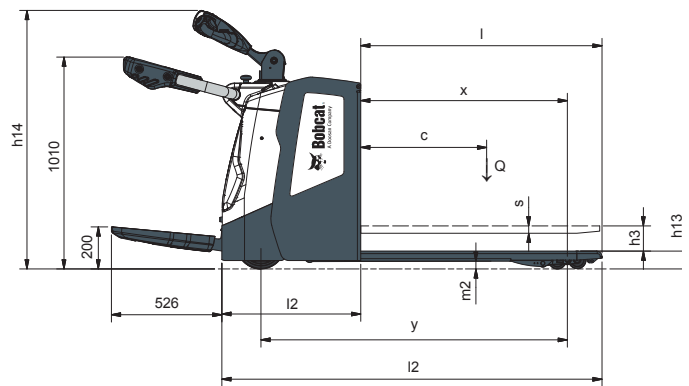


DIMENSIONS

▶ BPM20S-7



▶ BPR20S-7



FINANCING OPTIONS

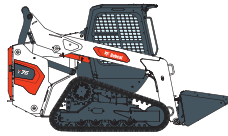
24, 36, OR 48 MONTH FINANCING*

Take advantage of 24, 36 or 48 month financing programs starting from **0% interest** and improve your cashflow. Ask your dealer for the financing offers available.

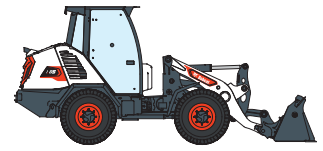
340 MACHINES / 150 ATTACHMENT FAMILIES / 1 TOUGH ANIMAL



**SKID-STEER
LOADERS**



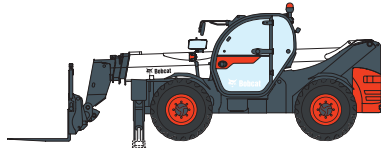
**COMPACT TRACK
LOADERS**



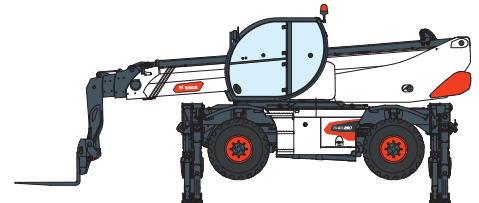
**COMPACT WHEEL
LOADERS**



FORKLIFTS



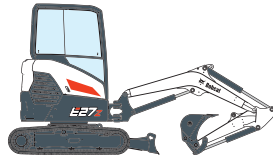
TELEHANDLERS



ROTARY TELEHANDLERS



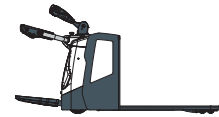
**LIGHT COMPACTION
EQUIPMENT**



**COMPACT
EXCAVATORS**



**COMPACT
TRACTORS**



**WAREHOUSE
EQUIPMENT**



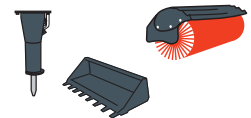
**MINI TRACK
LOADER**



MOWERS



**PORTABLE
POWER**



ATTACHMENTS



Bobcat®

DOOSAN

Bobcat is a Doosan Company. Doosan is a global leader in construction equipment, power & water solutions, engines, and engineering proudly serving customers and communities for more than a century. | Bobcat and the Bobcat logo are registered trademarks of Bobcat Company in the United States and various other countries. ©2024 Bobcat Company. All Rights Reserved.

*Financing options may vary by country and dealer. Always ask your dealer about currently available financing options. Terms and conditions may apply.

Doosan Bobcat EMEA, U Kodetky 1810, 263 12 Dobříš, Czech Republic

www.bobcat.com

©2024 BOBCAT B4502750-EN (03-24)